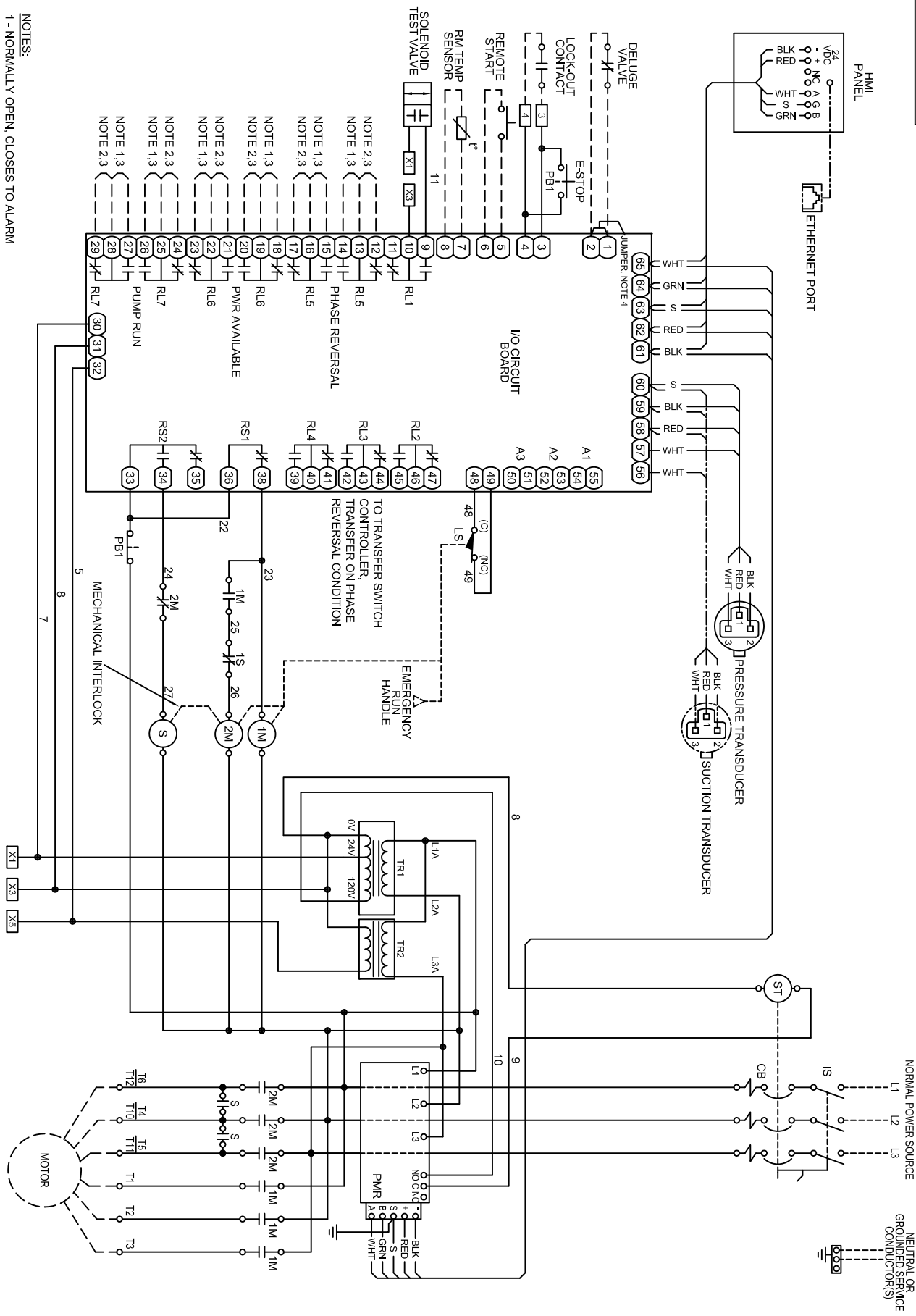


REVISIONS
NEW RELEASE
PER ECN L00141
REV. A: 05-24-10
REVERSE NO. & N.C. CONTACTS OF RL1, TR2 & TR3 ADDED.
ADD TEST SOLENOID TO RL1.
ECN E07005, L&T



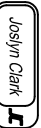
- NOTES:**
- 1 - NORMALLY OPEN, CLOSURES TO ALARM
 - 2 - NORMALLY CLOSED, OPENS TO ALARM
 - 3 - CONTACT RATING: 5 AMP MAX, 240 VAC, 30 VDC
 - 4 - REMOVE JUMPER WHEN DELUGE VALVE IN USE

DRAWING LEGEND

- - - CUSTOMER SUPPLIED COMPONENT OR WIRING
- - - CUSTOMER CONNECTION TERMINAL BLOCK
- - - I/O CIRCUIT BOARD CONNECTION
- - - DEVICE TERMINATION AND DESIGNATION
- (A) - OPTIONAL EQUIPMENT

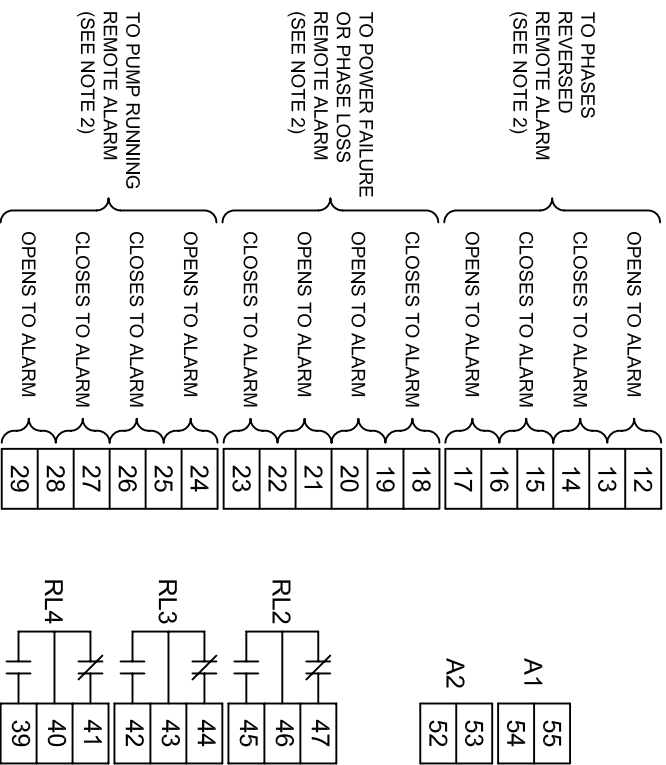
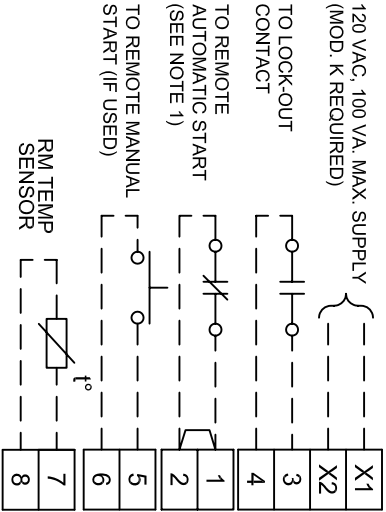
TITLE BUU. 10690 FIREPUMP CONTROLLERS
 WYE DELTA OPEN TRANSITION STARTING

MADE BY SDC APP'D DJD
 DATE 06/03/08


JOSLYN CLARK CONTROLS, LLC
 ELIZABETHTOWN, NC 28337 USA

2-06901-01 A

REVISIONS
NEW RELEASE
PER EGN L00141
REV A: G SERIES
PRODUCT LAUNCH
PER EGN E00787

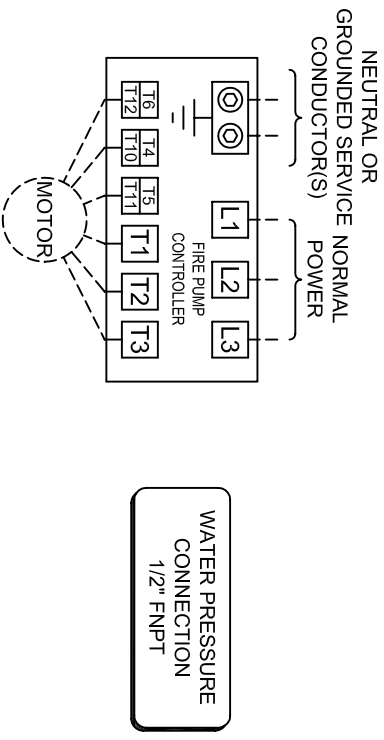


- NOTES:**
- REMOVE JUMPER IF A REMOTE AUTOMATIC START DEVICE IS USED. THE CONTACT ON THE DEVICE OPEN TO START THE PUMP.
 - ALARM CONTACT RATING: 5 AMP MAX, 240 VAC, 30 VDC.

TITLE: BUL. 10690 FIRE PUMP CONTROLLERS. MADE BY: SDC DATE: 05/30/08

WYE DELTA OPEN TRANSITION STARTING APP'D: DJD SCALE: 1

SUITABLE FOR USE AS SERVICE EQUIPMENT



LINE TERMINAL LUG SIZE (PER PHASE)

HORSEPOWER	WIRE CAPACITY (COPPER WIRE)		
	200V.	230V.	380V.
5 - 25	5 - 30	5 - 60	5 - 60
30	---	60	75
40 - 60	40 - 75	75 - 125	100 - 150
75 - 150	100 - 200	150 - 350	200 - 350
200	250	400	400-450
---	---	5	5
5 - 60	5 - 75	7.5 - 100	7.5 - 150
75 - 100	100 - 125	125 - 200	200 - 250

MOTOR TERMINAL LUG SIZE (PER PHASE)

MOTOR TERMINAL LUG SIZE (PER PHASE)	NEUTRAL OR GROUNDING CONDUCTORS		
	F SERIES	G SERIES	CONDUCTOR NOTES
5 - 15	5 - 20	5 - 30	5 - 40
20 - 30	35 - 30	40 - 60	50 - 60
40 - 50	40 - 60	75 - 100	75 - 125
60 - 100	75 - 125	125 - 200	150 - 250
125 - 200	150 - 250	250 - 400	300 - 500
5 - 20	5 - 25	5 - 40	5 - 40
20 - 50	30 - 50	50 - 75	50 - 100
60 - 100	60 - 100	100 - 150	125 - 200
---	125	200	250

- FOR PROPER WIRE SIZING, REFER TO THE NATIONAL ELECTRICAL CODE, NFPA 70 OR OTHER LOCAL CODES.
 - CONTROLLER IS PHASE ROTATION SENSITIVE. OBSERVE PHASE ROTATION L1-L2-L3 MUST BE IN ABC SEQUENCE.
 - THE LINE AND MOTOR TERMINALS WILL ACCOMMODATE AS A MINIMUM, COPPER CABLES CAPABLE OF CARRYING 125% OF THE MOTOR FULL LOAD CURRENT.

JOSLYN CLARK CONTROLS, LLC
 ELIZABETHTOWN, NC USA 28337
A 10-10690-2
 SHEET 1 OF 1